

360° EXHAUST

The 4-way ceiling exhaust allows 360 ° air flow. Each louver can be operated separately. When the air conditioner is restarted, the louvers return to the previously used position so that the usual preferred settings can be enjoyed.

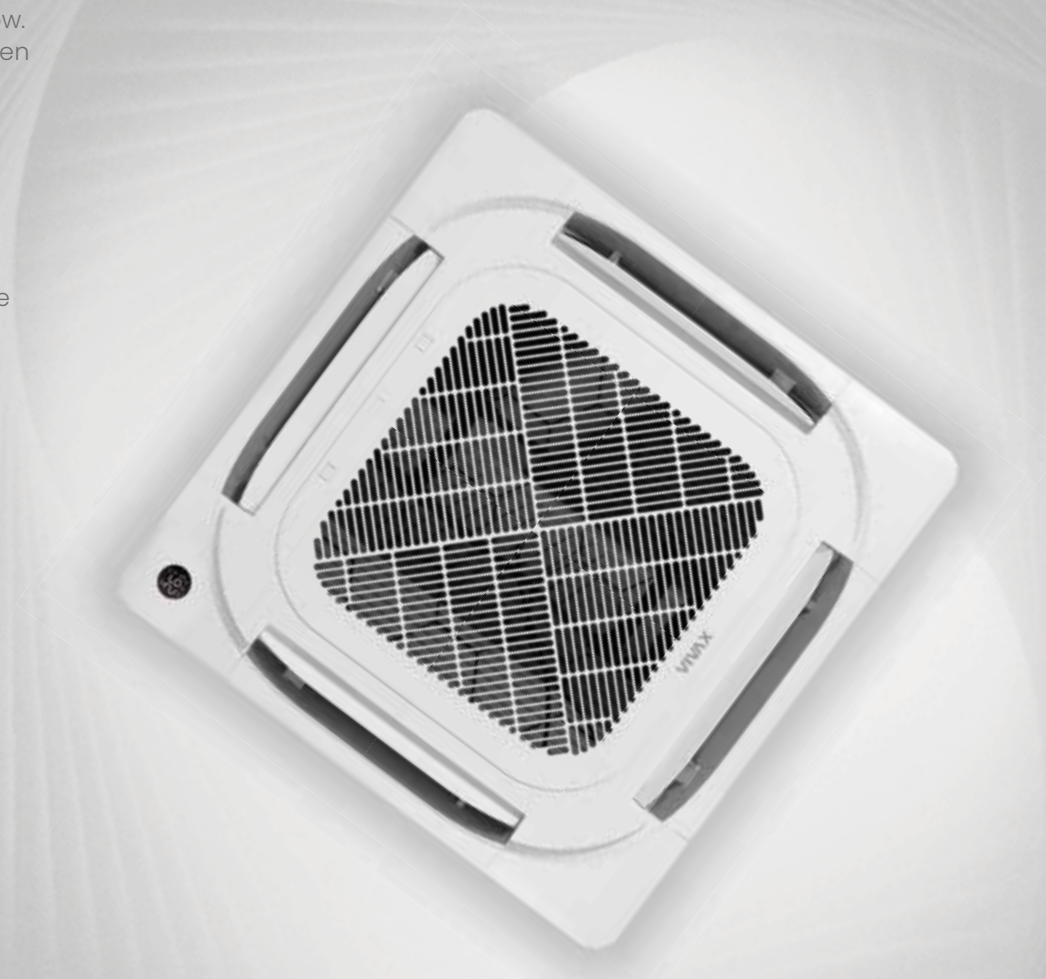
NEW PANEL DESIGN

The new panel design and Indoor unit fan ensure optimized aerodynamic performance and improved noise reduction to whisper volume levels.

Cassette split system

CC AERI

A++ Cooling SEER 6.6
A+ Heating SCOP 4.1



ENERGY SAVING



R32 gas



Night mode



ECO mode



Dust filter



Self-cleaning



1W Standby



Energy saving mode



Anti-corrosion protection - gold coating

HEALTH

RELIABILITY



Cooling at a temp. of -15 °C



Heating at a temp. of -20 °C



3D DC Inverter



Error detection and display



Coolant leak detection sensor



Emergency function



The protective cover of the valve



Chasis Heating Belt



Compressor Heating Belt



Intelligent defrosting



Operation at low voltage

COMFORT AND CONVENIENCE



Last mode memory



Timer



Louver Position Memory



Mono and multi compatibility



3 air flow speeds



Heating at 8 °C



Automatic operating mode



Turbo



Digital display



Condensate drain pump



Wired control device



Manual control



I Feel function



Silent operation



Two-way condensate drain hose



Auto swing



Strong air flow



Soft start



Wi-Fi ready



360° air flow

Model	ACP-12CC35AERI+ R32	ACP-18CC50AERI + R32	ACP-24CC70AERI + R32	ACP-36CC105AERI + R32	ACP-48CC140AERI + R32	ACP-55CC160AERI + R32	
Cooling	Capacity (W)	3520 (850-4110)	5280 (2900-5590)	7030 (3300-7910)	10550 (2700-11430)	14070 (3520-15830)	15240 (4100-16710)
	Energy efficiency class	A++	A++	A++	A++	A++	A++
	Energy Efficiency SEER	6.6	6.3	6.2	6.4	6.1	6.3
	Cooling operating range	-15 °C ≤ T ≤ 50 °C	-15 °C ≤ T ≤ 50 °C	-15 °C ≤ T ≤ 50 °C	-15 °C ≤ T ≤ 50 °C	-15 °C ≤ T ≤ 50 °C	-15 °C ≤ T ≤ 50 °C
	Estimated load on cooling (W)	3500	5300	7000	10500	14000	15300
	Power input (W)	1010 (168-1434)	1633 (720-2088)	2320 (780-2748)	4000 (890-4150)	4650 (800-5900)	5000 (980-6200)
Heating	Capacity (W)	3810 (470-4310)	5570 (2370-6100)	7620 (2810-8940)	11140 (2780-12660)	16120 (4100-17290)	18170 (4400-19930)
	Energy efficiency class	A+	A+	A+	A+	A+	A+
	Energy Efficiency SCOP	4.1	4.0	4.0	4.0	4.0	4.0
	Heating operating range	-20 °C ≤ T ≤ 24 °C	-20 °C ≤ T ≤ 24 °C	-20 °C ≤ T ≤ 24 °C	-20 °C ≤ T ≤ 24 °C	-20 °C ≤ T ≤ 24 °C	-20 °C ≤ T ≤ 24 °C
	Estimated load on heating (W)	2700	4200	6000	8200	11000	11900
	Power input (W)	1019 (124-1376)	1540 (700-1930)	1900 (610-2700)	3000 (780-4000)	4580 (900-5500)	5550 (1020-6700)
Indoor unit	Air flow (m³/h) - HI / MID / LOW	620 / 510 / 420	720 / 620 / 500	1300 / 1140 / 1000	1800 / 1600 / 1400	1970 / 1780 / 1580	2000 / 1850 / 1650
	Dehumidifying capacity (L/h)	1.2	1.8	2.4	3.6	4.8	5.5
	Noise - Sound Pressure (dB(A)) - HI / MID / LOW / SI	41 / 36 / 33 / 25.5	43 / 39.5 / 35.5 / 29	45.5 / 42.5 / 39.5 / 27	50 / 47.5 / 44.5 / 39	51 / 48.5 / 46.5 / 37.5	53 / 50.5 / 48 / 40
	Volume under standard conditions (dB)	≤ 56	≤ 57	≤ 57	≤ 63	≤ 65	≤ 65
	Packaging dimensions uredaja (mm)	662 x 662 x 317	662 x 662 x 317	910 x 910 x 250	910 x 910 x 290	910 x 910 x 330	910 x 910 x 330
	Panel packaging dimensions (mm)	715 x 715 x 123	715 x 715 x 123	1035 x 1035 x 90	1035 x 1035 x 90	1035 x 1035 x 90	1035 x 1035 x 90
	Device dimensions (mm)	570 x 570 x 260	570 x 570 x 260	830 x 830 x 205	830 x 830 x 245	830 x 830 x 287	830 x 830 x 287
	Panel dimension (mm)	647 x 647 x 50	647 x 647 x 50	950 x 950 x 55	950 x 950 x 55	950 x 950 x 55	950 x 950 x 55
	Gross / net weight uredaja (kg)	20.4 / 16.3	20.6 / 16	25.4 / 21.6	31.2 / 27.2	33.5 / 29.3	33.5 / 29.3
	Gross / net weight panela (kg)	4.5 / 2.5	4.5 / 2.5	9 / 6	9 / 6	9 / 6	9 / 6
Outdoor unit	Noise - Sound Pressure (dB(A))	≤ 60	≤ 63	≤ 67	≤ 70	≤ 73	≤ 73
	Volume under standard conditions (dB)	≤ 63	≤ 63	≤ 66	≤ 67	≤ 72	≤ 74
	Coolant	R32	R32	R32	R32	R32	R32
	Bracket distance (mm)	452	511	663	673	634	634
	Packaging dimensions (mm)	887 x 337 x 610	915 x 370 x 615	995 x 398 x 740	1090 x 500 x 885	1095 x 495 x 1480	1095 x 495 x 1480
	Device dimensions (mm)	765 x 303 x 555	805 x 330 x 554	890 x 342 x 673	946 x 410 x 810	952 x 415 x 1333	952 x 415 x 1333
Gross / net weight uredaja (kg)	29 / 26.6	35.2 / 32.5	46.9 / 43.9	85 / 80.5	118.3 / 103.7	121.2 / 107	
Connections	Liquid phase pipe diameter	1/4"	1/4"	3/8"	3/8"	3/8"	3/8"
	Gas phase pipe diameter	3/8"	1/2"	5/8"	5/8"	5/8"	5/8"
	Maximum pipe length (m)	25	30	50	75	75	75
	Maximum height difference (m)	10	20	25	30	30	30
	Pre-filled pipe length (m)	5	5	5	5	5	5
	Gas refill (g/m)	12	12	24	24	24	24
Interconnect cable	Outdoor unit power supply (mm²)	4 x 2.5	3 x 2.5	3 x 2.5	3 x 2.5	5 x 2.5	5 x 2.5
	Indoor unit power supply (mm²)	3 x 1.0	3 x 1.0	3 x 1.0	3 x 1.0	3 x 1.0	3 x 1.0
	Connection (mm²)	-	2 x 0.2	2 x 0.2	2 x 0.2	2 x 0.2	2 x 0.2
Power Supply	~220-240V/1/50Hz; Indoor and outdoor unit			~220-240V/1/50Hz IU, ~380-415V/3/50Hz OU			